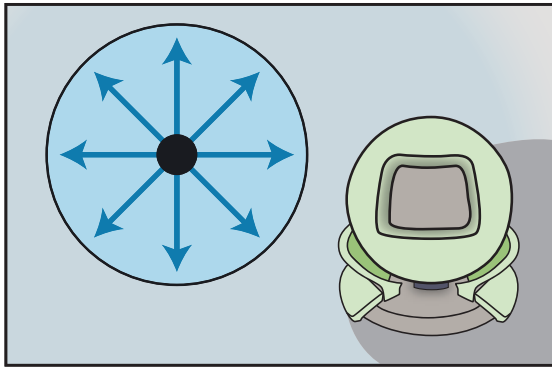
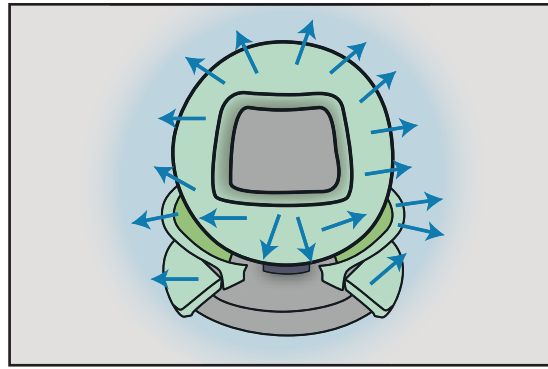


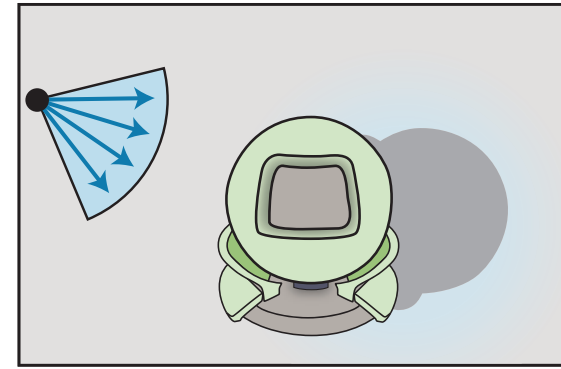
# Standard emitters



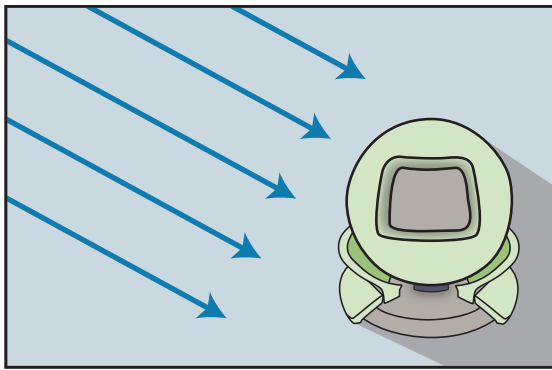
Point emitter (point)



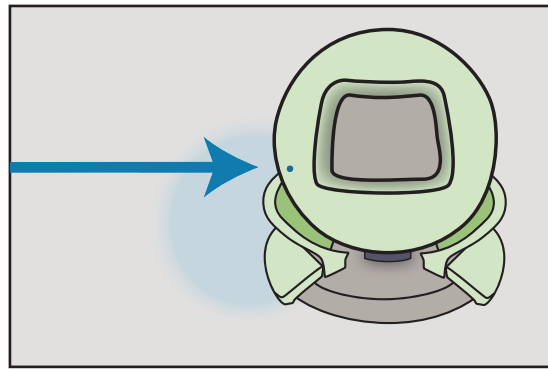
Area emitter (area)



Spot emitter (spot)

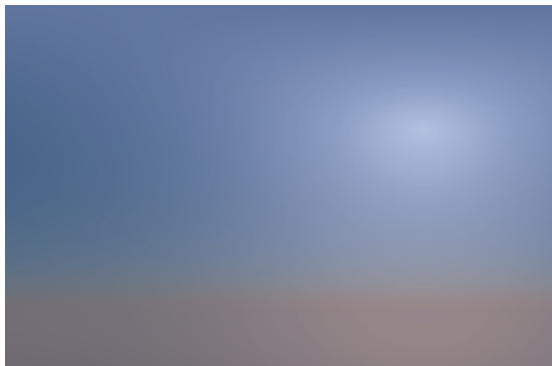


Directional emitter (directional)



Collimated beam (collimated)

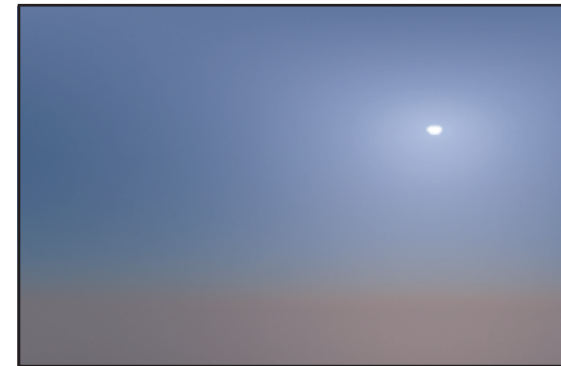
# Environment emitters



Sky emitter (sky)



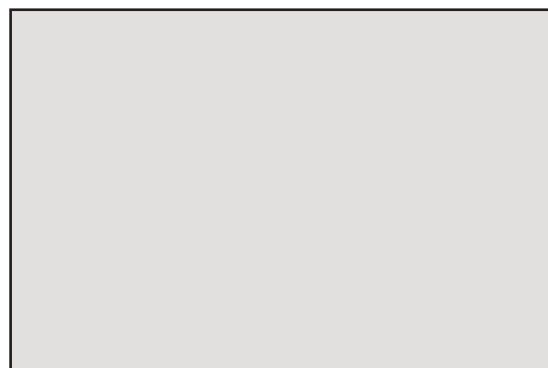
Sun emitter (sun)



Sun & sky emitter (sunsky)



Environment map emitter (envmap)



Constant environment emitter (constant)